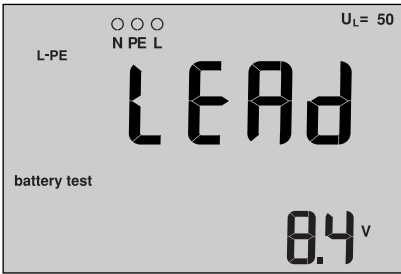
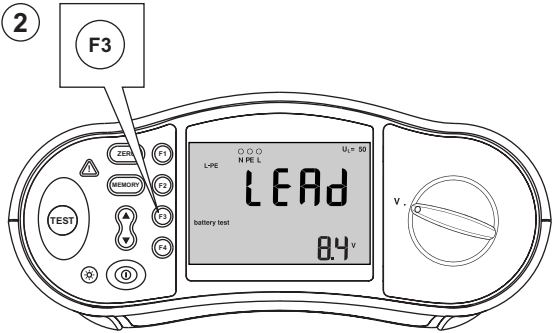
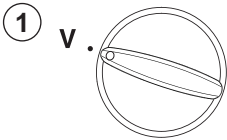


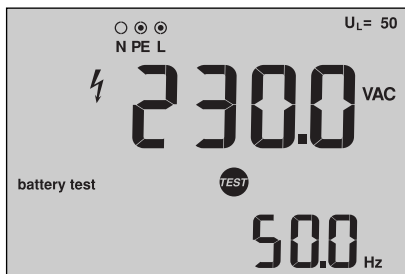
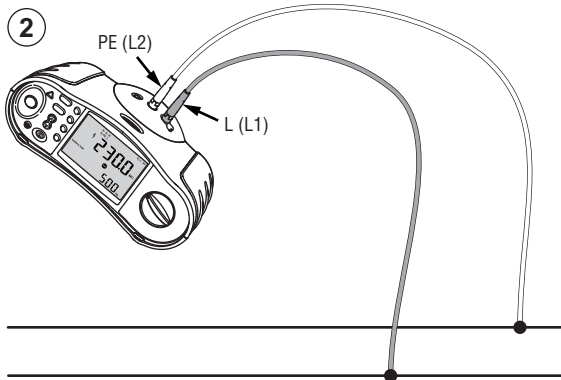
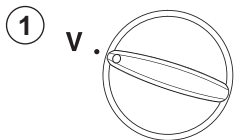
165X Quick Reference Guide

Warning

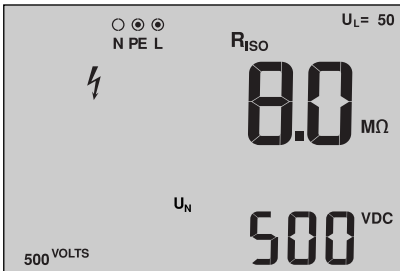
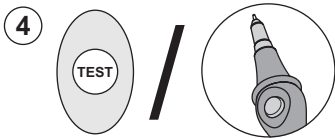
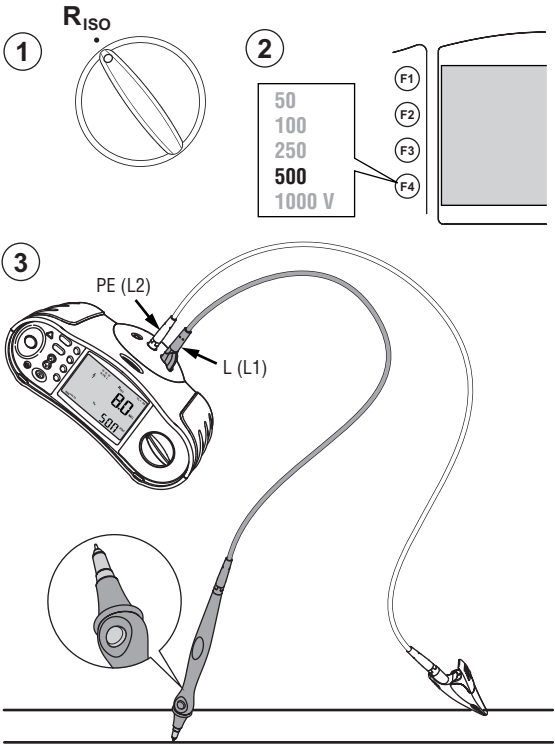
- Read the 165X Users Manual before using the tester.
- Lisez le mode d'emploi du 165X avant d'utiliser le testeur.
- Leggere il manuale d'uso del 165X prima di usare il tester.
- Vor dem Gebrauch des Testgeräts das 165X-Bedienungshandbuch lesen.
- Lea el Manual de uso del comprobador 165X antes de utilizarlo.
- Leia o Manual do Usuário 165X antes de usar o testador.
- Lees de 165X gebruiksaanwijzing vóór gebruik van de tester.
- Les bruksanvisningen for 165X før måleinstrumentet tas i bruk.
- Man bør læse brugsanvisningen til modelserie 165X, inden instrumentet tages i brug.
- Lue 165X-käyttöopas ennen tämän testerin käyttöä.
- Läs användarhandboken för 165X innan du använder testinstrumentet.



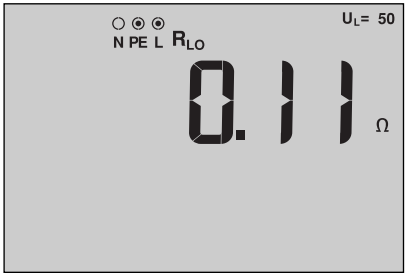
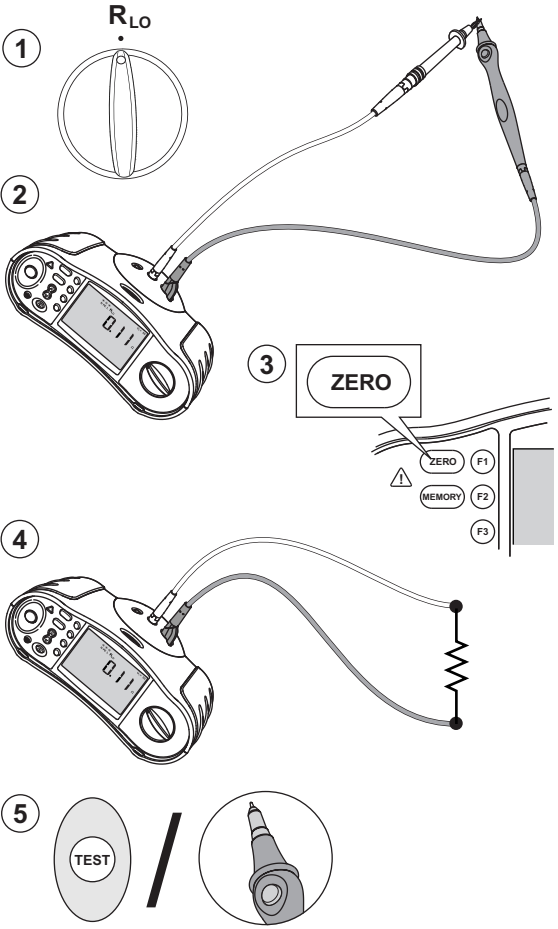
V, Hz



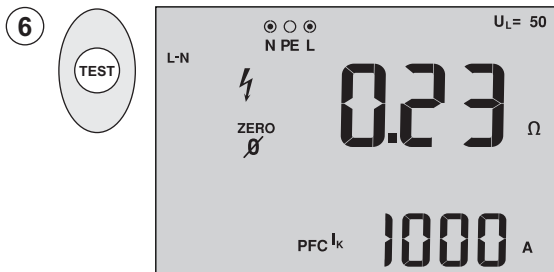
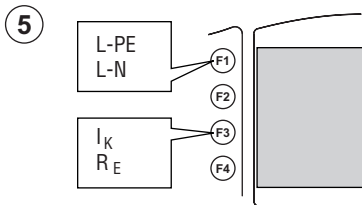
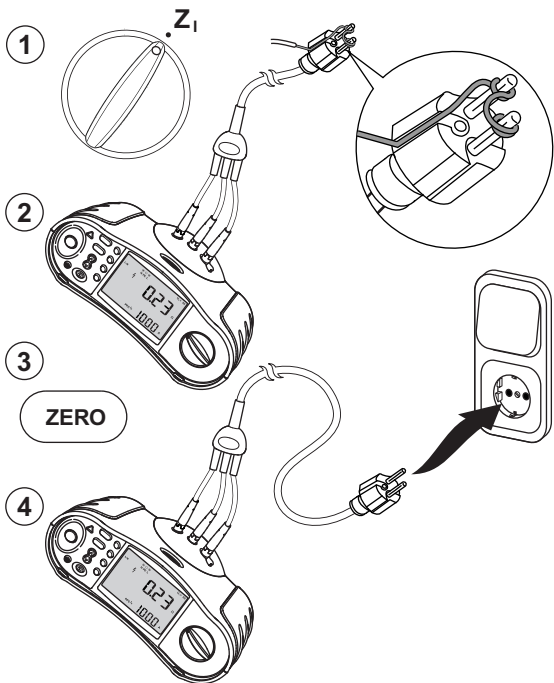
R_{ISO} Insulation · Isolement · Isolation



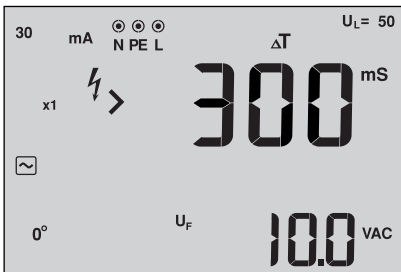
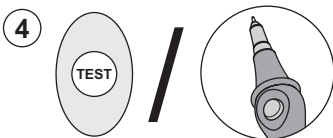
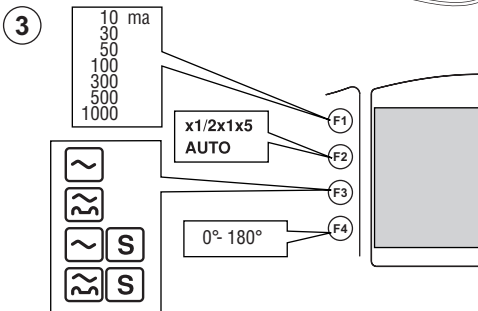
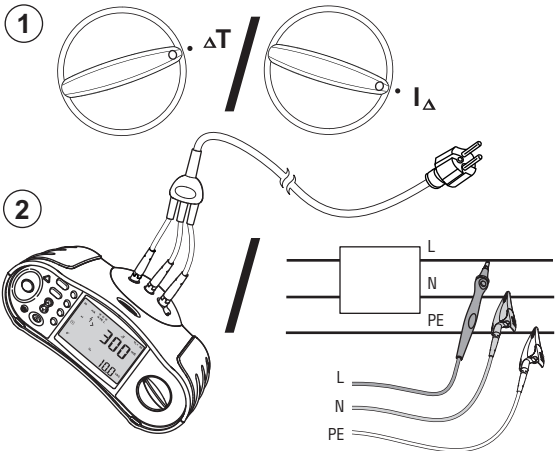
R_{LO} Continuity · Continuité · Niederohm



Z₁ Loop · Boucle · Schleife

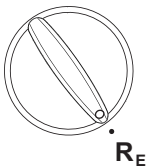


$\Delta T / I_{\Delta N}$ RCD · Disjoncteur différentiel · FI

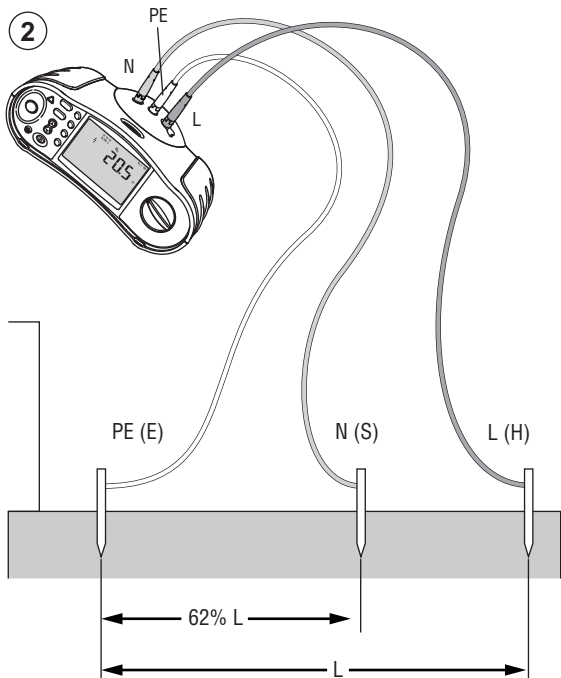


R_E Earth · Terre · Erde

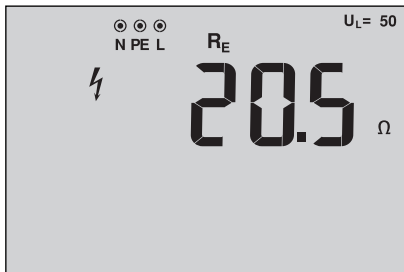
1



2



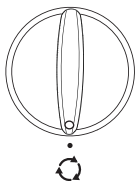
4



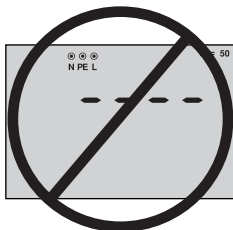
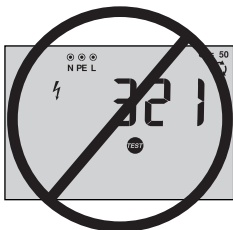
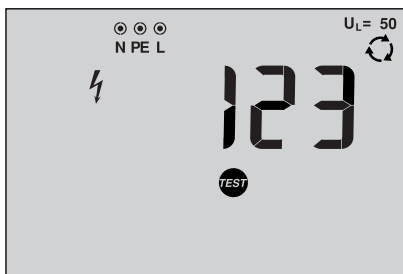
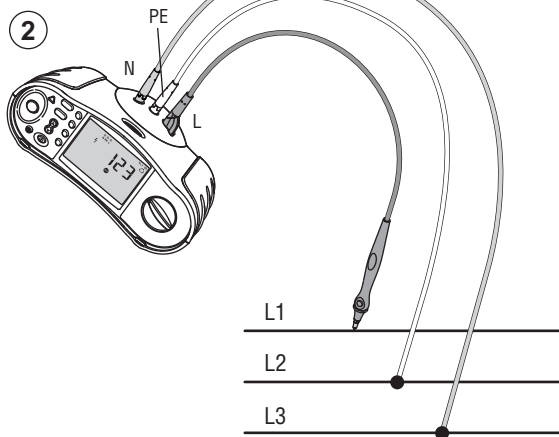


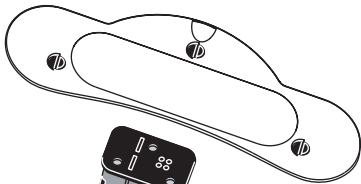
Phase rotation · Rotation de phase · Phasenfolge

1

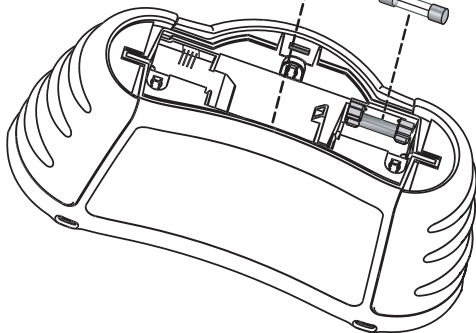


2





1.25 A, 500 V
Type F



IR

